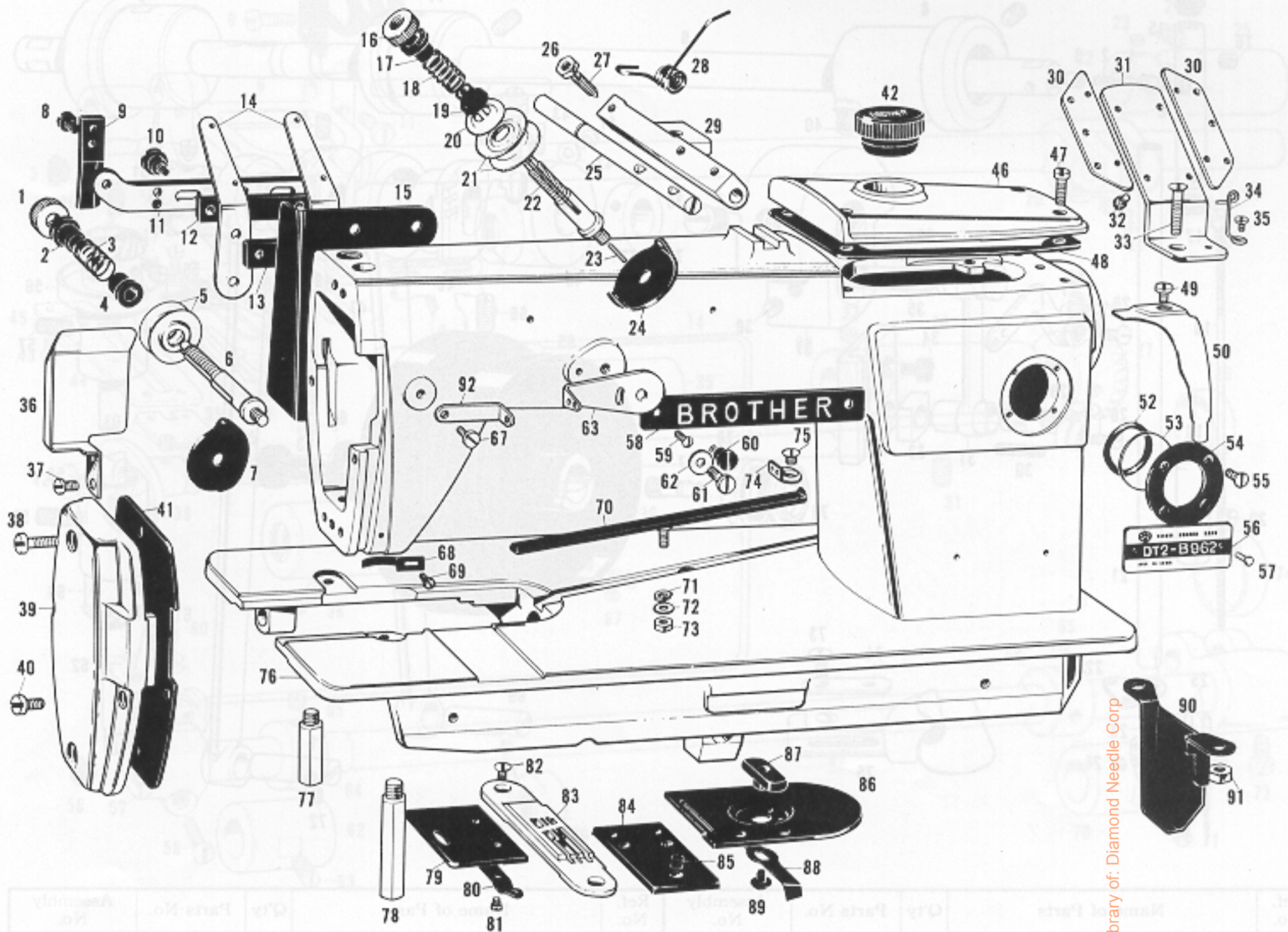


A. Machine Body

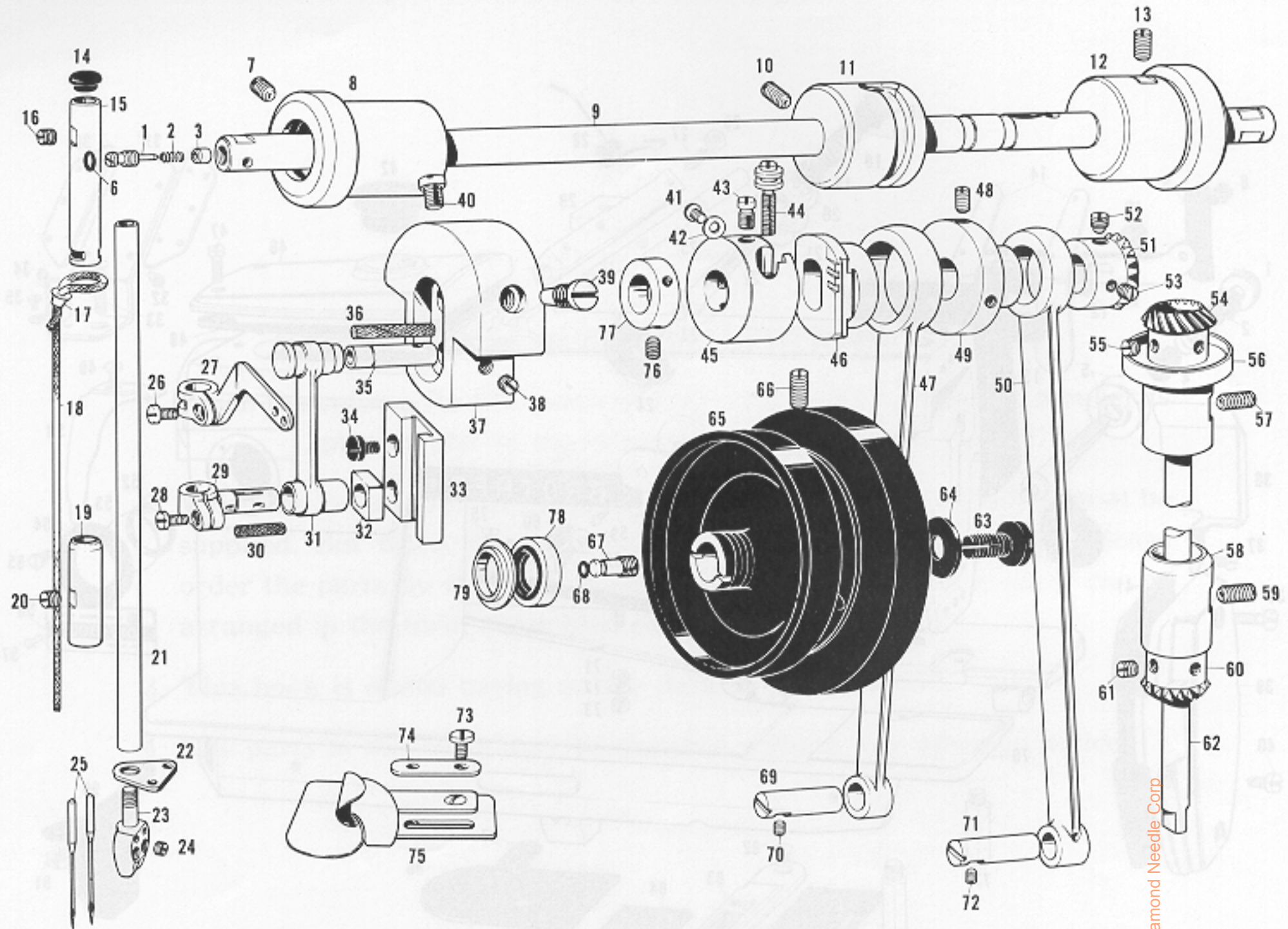
Upper Shaft Needle Bar Mechanism



From the library of: Diamond Needle Corp

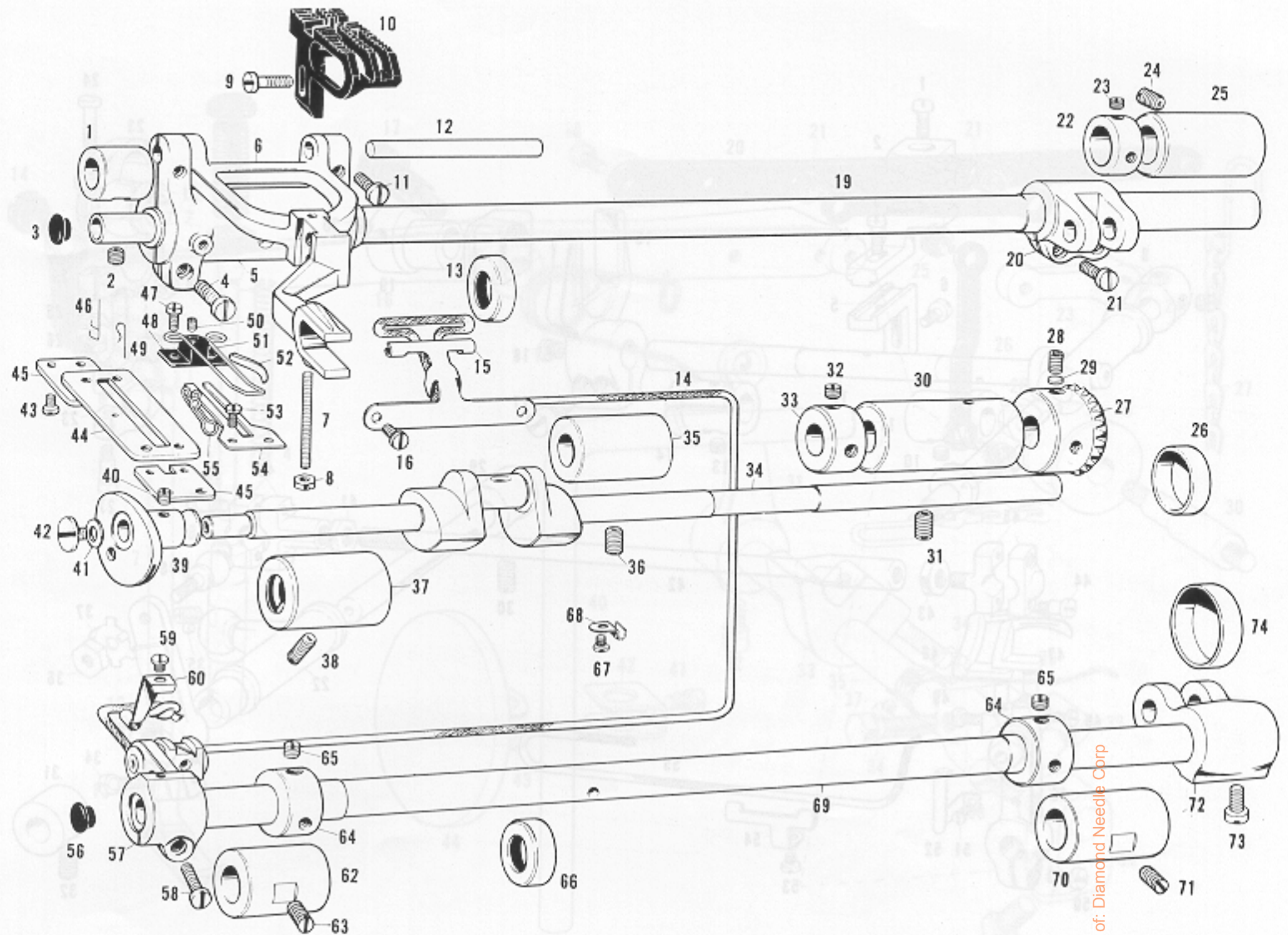
Ref. No.	Name of Parts	Q'ty	Parts No.	Ref. No.	Name of Parts	Q'ty	Parts No.	Ref. No.	Name of Parts	Q'ty	Parts No.
A-1	Tension Control Nut	2	105230-0-01	A-23	Upper Thread Release Pin	2	105231-0-00	A-63	Upper Thread Adjusting Plate	1	113731-0-01
A-2	Washer	2	144105-0-00	A-25	Thread Release Shaft	1	115868-0-01	A-67	Screw	1	009670-5-12
A-3	Tension Spring	2	105278-0-00	A-28	Thread Release Spring	1	113727-0-01	A-68	Upper Thread Guide	1	115867-0-01
A-4	Washer	2	105229-0-01	A-30	Upper Thread Guide	2	105221-0-01	A-69	Screw	1	009670-4-12
A-5	Tension Disc	4	145446-0-01	A-31	Upper Thread Guide Retainer	1	105220-0-01	A-70	Lower Thread Guide -73 Assembly	1	113748-0-01
A-6	Tension Stud	2	113740-0-01	A-32	Screw	4	009630-4-12	A-70	Lower Thread Guide Plate	1	113749-0-01
A-7	Thread Guide	2	105226-0-01	A-33	Screw	1	105223-0-01	A-71	Washer	1	113750-0-00
A-8	Screw	2	009680-5-12	A-34	Thread Hanger	1	105222-0-01	A-72	Washer	1	105161-0-03
A-9	Slide Plate (A)	2	113746-0-01	A-35	Screw	1	009670-4-14	A-73	Nut	1	021670-2-03
A-10	Stud Screw	2	113745-0-01	A-36	Oil Stopper	1	113787-0-01	A-74	Lower Thread Guide	1	113751-0-01
A-11	Slide Plate (B)	1	113744-0-01	A-37	Screw	1	009670-6-13	A-75	Screw	1	100032-0-03
A-12	Lower Thread Guide Set Plate (A)	1	113742-0-01	A-38	Screw	3	009681-2-14	A-76	Arm Bed	1	
A-13	Lower Thread Guide Set Plate (B)	1	113743-0-01	A-39	Face Plate	1	113792-0-01	A-77	Bed Leg Small	1	113591-0-01
A-14	Lower Thread Guide	2	113741-0-01	A-40	Screw	1	009680-7-14	A-78	Bed Leg, Long	1	113590-0-01
A-15	Lower Thread Tension Bracket Cover	1	115871-0-01	A-41	Packing for Face Plate	1	113763-0-01	A-79-81	Slide Plate Assembly	1	113618-0-01
A-16-22	Upper Thread Tension Control Assembly	1	181019-0-01	A-42	Oil Cap	1	112782-0-01	A-79	Slide Plate	1	
A-16	Tension Control Nut	2	105230-0-01	A-46	Top Cover	1	113791-0-01	A-80	Slide Plate Spring	1	114561-0-01
A-17	Washer	2	144105-0-00	A-47	Screw	4	009711-4-12	A-81	Screw	2	122771-0-01
A-18	Upper Thread Tension Spring	2	105227-0-01	A-48	Packing	1	113582-0-00	A-82	Screw	2	100032-0-04
A-19	Washer	2	105229-0-01	A-49	Screw	1	009711-0-12	A-83	Needle Plate	1	
A-20	Tension Disc Washer	2	100134-0-01	A-50	Oil Guide	1	113786-0-01	A-84	Lapper Guide Plate	1	113761-0-01
A-21	Tension Disc	4	145446-0-01	A-52	Packing	1	081014-6-70	A-85	Screw	1	102716-0-03
A-22	Upper Thread Tension Stud	2	105225-0-01	A-53	Oil Gauge Window	1	104547-0-01	A-86	Bed Window Plate	1	115865-0-01
A-24	Thread Guide	2	105226-0-01	A-54	Oil Gauge Flange	1	104546-0-01	A-87	Window Plate Knob	1	113595-0-01
A-26	Nut	1	105234-0-01	A-55	Screw	4	102538-0-02	A-88	Spring	1	113596-0-01
A-27	Screw	1	105233-0-01	A-56	Model Plate	1		A-89	Screw	1	105130-0-01
A-29	Upper Tension Bracket	1		A-57	Model Plate Pin	2		A-90	Pump Cover	1	113592-0-01
				A-58	Name Plate "BROTHER"	1		A-91	Nut	2	021780-2-02
				A-59	Screw	2	102731-0-02	A-92	Arm Thread Guide	1	105238-0-02
				A-60	Screw	1	113730-0-01				
				A-61	Screw	1	009670-8-12				
				A-62	Washer	1	105161-0-03				

B. Upper Shaft Needle Bar Mechanism



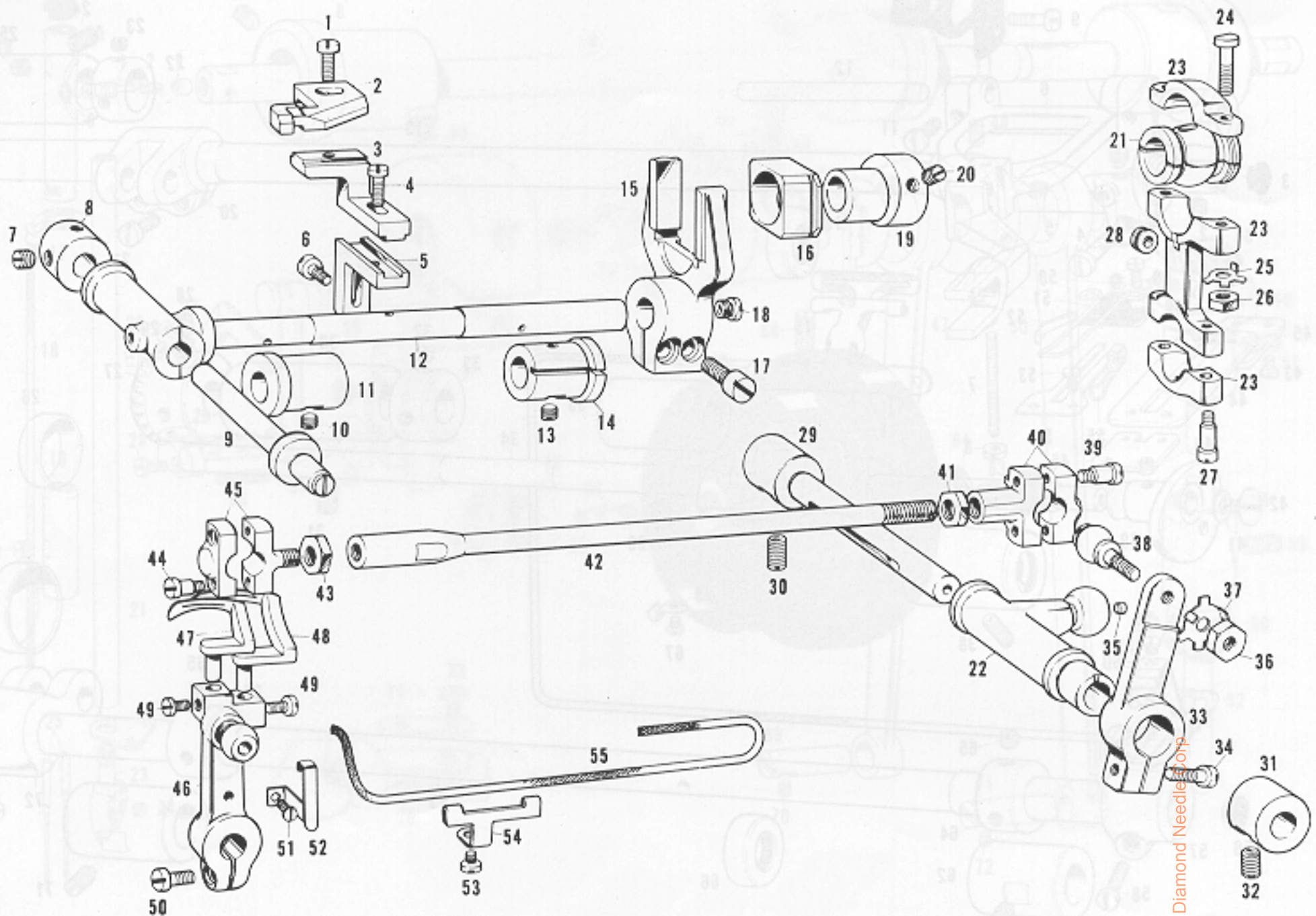
Ref. No.	Name of Parts	Q'ty	Parts No.	Assembly No.	Ref. No.	Name of Parts	Q'ty	Parts No.	Assembly No.
B-1	Oil Adjusting Screw	1	140412-0-01		B-43	Screw	3	105163-0-01	
B-2	Spring	1	116799-0-01		B-44	Adjusting Screw	1	113644-0-01	Eccentric Wheel Assembly
B-3	Oil Bushing	1	140357-0-01		B-45	Feed Eccentric Bracket	1		113641-0-01
B-6	Packing	1	118770-0-01		B-46	Feed Eccentric	1		
B-7	Screw	1	013761-4-10		B-47	Horizontal Feed Connecting Rod	1	115860-0-01	
B-8	Upper Shaft Bushing Left	1	113598-0-00		B-48	Screw	2	013761-0-10	
B-9	Upper Shaft	1	113597-0-01		B-49	Eccentric Wheel	1	113645-0-01	
B-10	Screw	1	013761-4-10		B-50	Vertical Feed Connecting Rod	1	115859-0-01	
B-11	Upper Shaft Bushing Intermediate	1	113599-0-00		B-51	Upper Shaft Gear	1		Upper Shaft Gear
B-12	Upper Shaft Bushing Right	1	113600-0-00		B-52	Screw	1	113673-0-01	180879-0-01
B-13	Screw	1	013760-6-10		B-53	Screw	1	013770-7-10	
B-14	Oil Cap	1	104450-0-01		B-54	Vertical Shaft Gear	1		Vertical Shaft Gear Assembly
B-15	Needle Bar Bushing Upper	1	113606-0-01		B-55	Screw	2	013770-7-10	180889-0-01
B-16	Screw	1	102716-0-03		B-56	Vertical Shaft Bushing Upper	1	113679-0-00	
B-17	Wick Nipper	1	109993-0-01		B-57	Screw	1	013761-4-10	
B-18	Wick	1	113608-0-00		B-58	Vertical Shaft Bushing Lower	1	113680-0-00	
B-19	Needle Bar Bushing, Lower	1	113607-0-01		B-59	Screw	1	013761-4-10	
B-20	Screw	1	102716-0-03		B-60	Vertical Shaft Lower Gear	1		Vertical Shaft Gear Assembly
B-21	Needle Bar	1	113605-0-01		B-61	Screw	2	013770-7-10	180889-0-01
B-22	Needle Bar Thread Guide	1	115904-0-01		B-62	Vertical Shaft	1	146368-0-01	
B-23	Needle Holder	1			B-63	Screw	1	104478-0-01	
B-24	Screw	2	103408-0-01		B-64	Packing	1	113621-0-01	
B-25	Needle TV x 1				B-65	Pulley	1	142114-0-01	
B-26	Screw	1	009670-8-12		B-66	Screw	2	013761-4-10	
B-27	Thread Take-up Lever	1	115866-0-01		B-67	Oil Screw Right for Upper Shaft	1	104555-0-01	
B-28	Screw	1	009670-8-12		B-68	Packing	1	081002-6-70	
B-29	Needle Bar Bracket	1		Needle Bar Connector Assembly	B-69	Feed Rock Shaft Arm Pin	1	109153-0-01	
B-31	Needle Bar Crank Rod	1		182174-0-01	B-70	Screw	1	013689-4-12	
B-35	Needle Bar Crank	1			B-71	Feed Rock Shaft Arm Pin	1	109153-0-01	
B-30	Wick	1	105363-0-01		B-72	Screw	1	013689-4-12	
B-32	Needle Bar Guide Slide Black	1	105078-0-01		B-73	Screw	2	113760-0-01	
B-33	Needle Bar Guide	1	105079-0-01		B-74	Washer	1	113762-0-01	
B-34	Screw	2	009681-0-12		B-75	Lapper Assembly	1		
B-36	Wick	1	108896-0-01		B-76	Screw	2	014770-6-22	
B-37	Thread Take-up Crank	1			B-77	Collar	1	119037-0-01	
B-38	Screw	2	013780-7-10		B-78	Oil Seal	1	101487-0-00	
B-39	Screw	1	104464-0-01		B-79	Oil Rejector	1	105670-0-00	
B-40	Screw	1	113603-0-01						
B-41	Screw	2	009670-4-12	113641-0-01					
B-42	Washer	2	105161-0-03						

C. Feed Mechanism



Ref. No.	Name of Parts	Q'ty	Parts No.	Assembly No.	Ref. No.	Name of Parts	Q'ty	Parts No.	Assembly No.
C-1	Feed Rock Shaft Bushing Left	1	113649-0-00		C-38	Screw	1	013761-4-10	
C-2	Screw	1	013760-8-10		C-39	Lower Thread Take-up	1	146219-0-01	
C-3	Oil Cap	1	104450-0-01		C-40	Screw	2	102716-0-03	
C-4	Screw	2	009711-2-12		C-41	Packing	1	113691-0-01	
C-5	Feed Bar Rock Shaft Arm	1	148287-0-01		C-42	Screw	1	105156-0-03	
C-6	Feed Bar	1	115861-0-01		C-43	Screw	4	009670-5-12	
C-7	Screw	1	113658-0-01		C-44	Lower Thread Presser Plate	1	146222-0-01	
C-8	Nut	1	021660-1-03		C-45	Lower Thread Take-up Guide Plate	2	113753-0-01	
C-9	Screw	1	009681-6-12		C-46	Lower Thread Guide (A)	1	146361-0-00	
C-10	Feed Dog	1			C-47	Screw	2	009670-8-14	
C-11	Screw	2	100064-0-04		C-48	Lower Thread Holder	1	146224-0-01	
C-12	Feed Bar Shaft	1	113655-0-01		C-49	Lower Thread Guide (B)	1	146362-0-00	
C-13	Oil Stop Ring	1	113659-0-01		C-50	Screw	1	117666-0-01	
C-14	Wick	1	149293-0-00		C-51	Lower Thread Take-up Guide	1	105291-0-01	
C-15	Wick Supporter	1	113654-0-01		C-52	Lower Thread Stopper	1	146225-0-01	
C-16	Screw	2	009670-5-12		C-53	Screw	2	009670-5-12	
C-19	Feed Rock Shaft	1	113647-0-01		C-54	Lower Thread Take-up Thread Guide	1	113759-0-01	
C-20	Feed Rock Shaft Arm	1	109152-0-01		C-55	Lower Thread Take-up Guide (A)	1	146223-0-00	
C-21	Screw	2	009681-2-14		C-56	Oil Cap	1	104450-0-01	
C-22	Feed Rock Shaft Collar	1	113650-0-01		C-57	Feed Lifting Arm	1	181012-0-01	
C-23	Screw	2	102716-0-03		C-58	Screw	1	009681-2-14	
C-24	Screw	1	013761-0-10		C-59	Screw	1	009670-4-12	
C-25	Feed Rock Shaft Bushing Right	1	113648-0-00		C-60	Wick Guide	1	113671-0-01	
C-26	Lower Shaft Cap	1	113689-0-01		C-62	Feed Lifting Shaft Bushing Left	1	113663-0-00	
C-27	Lower Shaft Gear	1		Lower Shaft Gear 180880-0-01	C-63	Screw	1	013761-0-10	
C-28	Screw	2	014770-6-22		C-64	Feed Rock Shaft Collar	2	113650-0-01	
C-29	Washer	2	101028-0-00		C-65	Screw	4	102716-0-03	
C-30	Lower Shaft Bushing Right	1	113685-0-00		C-66	Oil Stop Ring	1	113659-0-01	
C-31	Screw	1	013761-0-10		C-67	Screw	1	009679-3-12	
C-32	Screw	2	101706-0-01	Lower Shaft Collar 181969-0-03	C-68	Wick Supporter	1	113785-0-01	
C-33	Collar	1			C-69	Feed Lifting Rock Shaft	1	113662-0-01	
C-34	Lower Shaft	1	113681-0-01		C-70	Feed Lifting Shaft Bushing Right	1	113648-0-00	
C-35	Lower Shaft Bushing	1	113686-0-00		C-71	Screw	1	013761-0-10	
C-36	Screw	1	013761-0-10		C-72	Feed Lifting Arm	1	113664-0-01	
C-37	Lower Shaft Bushing Left	1	113687-0-00		C-73	Screw	2	009761-0-12	
					C-74	Feed Lifting Shaft Cap	1	113665-0-01	Lower Thread Take-up Assembly 146220-0-01

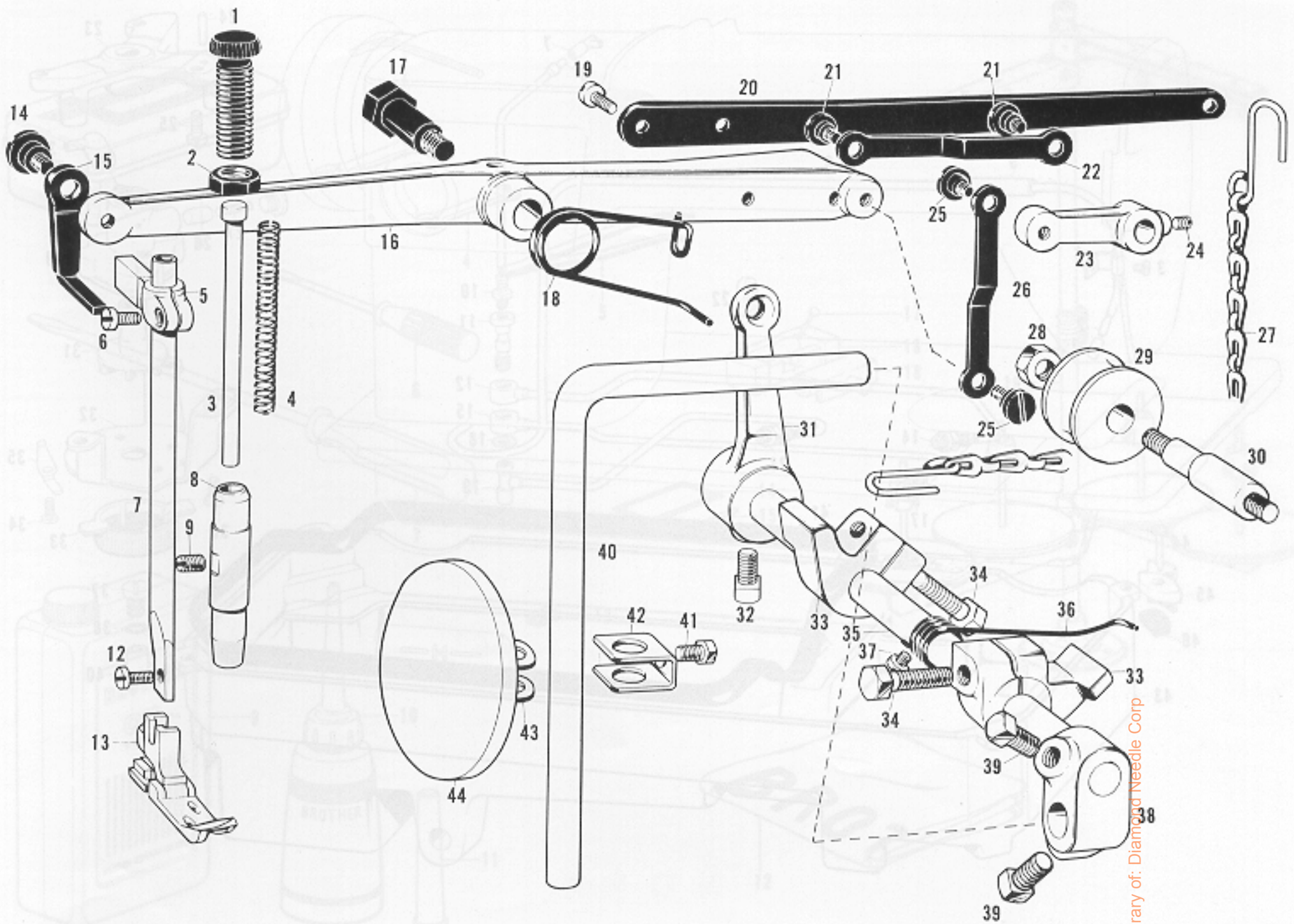
D. Loooper Mechanism



From the library of: Diamond Needle Corp.

Ref. No.	Name of Parts	Q'ty	Parts No.	Assembly No.	Ref. No.	Name of Parts	Q'ty	Parts No.	Assembly No.
D-1	Screw	1	009670-8-12		D-28	Stopper	1	113696-0-01	
D-2	Needle Guide	1			D-29	Looper Drive Round Joint Arm Shaft	1	146369-0-01	
D-3	Needle Guide Bracket Upper	1	113611-0-01		D-30	Screw	1	013761-0-10	
D-4	Screw	1	009670-8-12		D-31	Bushing	1	113699-0-01	
D-5	Needle Guide Bracket, Lower	1	113612-0-01		D-32	Screw	1	013761-0-10	
D-6	Screw	1	009670-8-12		D-33	Looper Drive Shaft Arm	1	113700-0-01	
D-7	Screw	2	101706-0-01	Collar 181995-0-01	D-34	Screw	1	009681-6-12	
D-8	Collar	1			D-35	Oil Cap	1	140708-0-00	
D-9	Looper Holder Shaft	1	115862-0-01		D-36	Nut	1	105875-0-02	
D-10	Screw	1	100058-0-03		D-37	Looper Drive Shaft Washer	1	113703-0-01	
D-11	Bushing Left	1	113719-0-00		D-38	Looper Drive Round Joint Shaft	1		Driving Joint Assembly 181017-0-01
D-12	Looper Feeding Shaft	1	113717-0-01		D-39	Screw	2	100526-0-03	
D-13	Screw	1	100058-0-03		D-40	Looper Drive Connecting Rod	1		
D-14	Bushing Right	1	113718-0-00		D-41	Nut	1	113706-0-01	
D-15	Looper Feeding Hork	1		Looper Feeding Assembly 180909-0-01	D-42	Looper Drive Shaft	1	113707-0-01	
D-16	Looper Feeding Slide Block	1			D-43	Nut	1	021760-3-04	
D-17	Screw	2	105073-0-02		D-44	Screw	2	100526-0-03	Looper Holder Clamp Assembly 181020-0-01
D-18	Oil Cap	2	113722-0-01		D-45	Looper Holder Clamp	1		
D-19	Looper Feeding Eccentric Shaft	1	113683-0-01		D-46	Looper Holder	1		
D-20	Screw	2	013780-7-10		D-47	Looper Short	1		
D-21	Lifting Crank	1			D-48	Looper Long	1		
D-22	Looper Drive Arm	1			D-49	Screw	2	106527-0-01	
D-23	Looper Connecting Rod	1		Looper Driving Connector Assembly 181016-0-01	D-50	Screw	1	009681-2-12	
D-24	Screw	2	113694-0-01		D-51	Screw	1	009660-3-02	
D-25	Washer	2	113695-0-01		D-52	Looper Holder Oil Wick Guide	1	113723-0-01	
D-26	Nut	2	105234-0-01		D-53	Screw	1	009670-5-12	
D-27	Screw	2	110082-0-01		D-54	Oil Wick Holder	1	113783-0-01	
					D-55	Wick	1	113782-0-00	

E. Presser Foot, Knee Lifter Mechanism

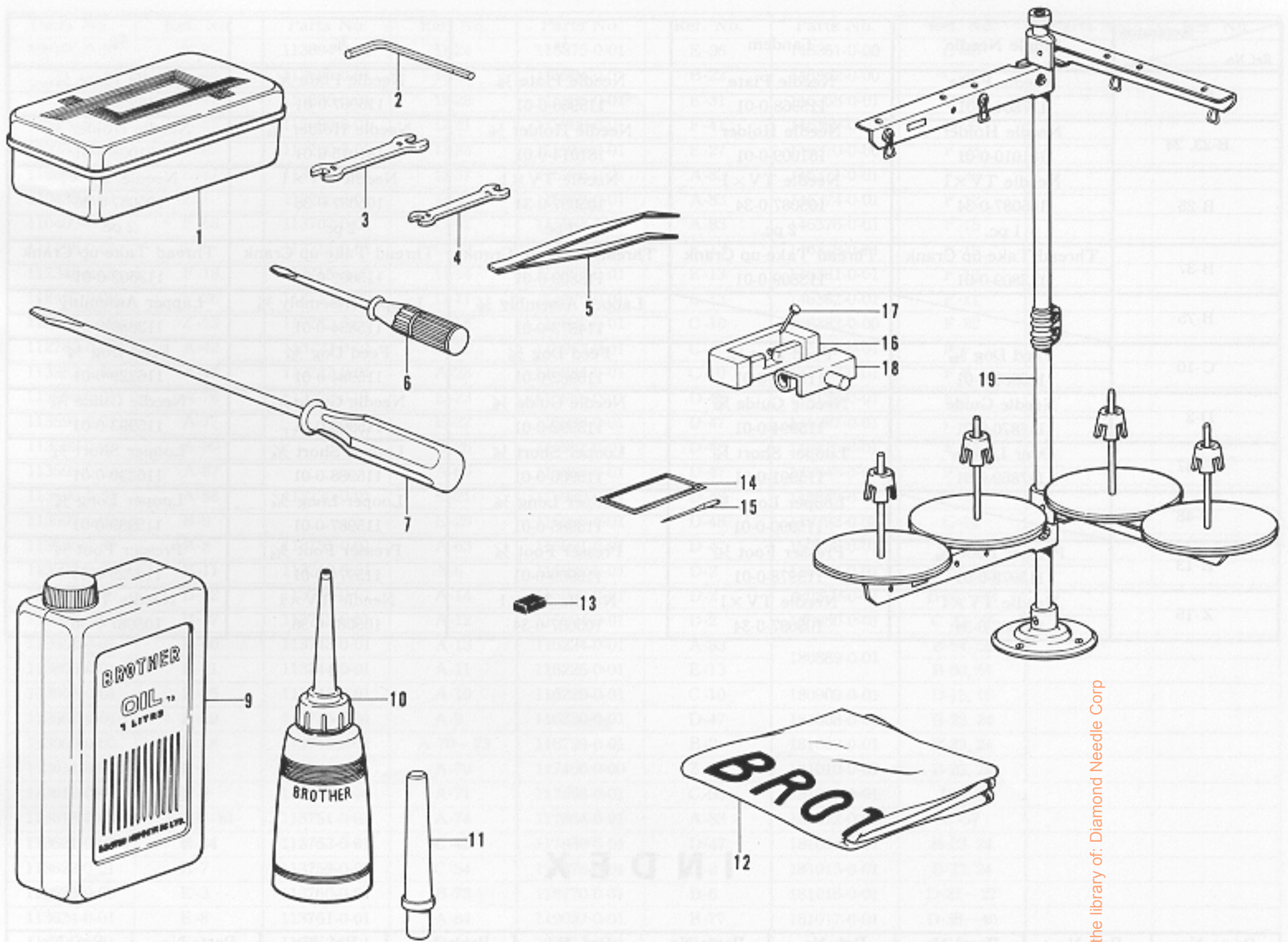


From the library of: Diamond Needle Corp

Ref. No.	Name of Parts	Q'ty	Parts No.	Assembly No.	Ref. No.	Name of Parts	Q'ty	Parts No.	Assembly No.
E-1	Screw	1	113625-0-01		E-24	Screw	1	013680-6-12	
E-2	Nut	1	102412-0-02		E-25	Screw	2	113730-0-01	
E-3	Presser Bar	1	113623-0-00		E-26	Thread Release Connecting Bar	1	113729-0-01	
E-4	Presser Spring	1	113627-0-00		E-27	Chain Assembly	1	115910-0-01	
E-5	Presser Bar Bracket	1		Presser Bar Bracket 181011-0-01	E-28	Nut	1	101268-0-03	
E-6	Screw	1	105176-0-01		E-29	Knee Lifter Roller	1	115872-0-01	
E-7	Presser Bar	1	113622-0-01		E-30	Knee Lifter Roller Shaft	1	115873-0-01	
E-8	Presser Bar Bushing	1	113624-0-01		E-31	Knee Lifter Connecting Lever	1	115905-0-01	
E-9	Screw	1	102716-0-03		E-32	Bolt	2	100463-0-01	
E-12	Screw	1	009670-8-12		E-33	Collar	2	104890-0-02	
E-13	Presser Foot	1			E-34	Bolt	2	017762-2-03	
E-14	Screw	1	105104-0-01		E-35	Knee Lifter Shaft	1	115874-0-01	
E-15	Presser Bar Lifter	1	113639-0-01		E-36	Spring	1	115875-0-01	
E-16	Presser Lifter A	1	113638-0-01		E-37	Screw	1	009670-5-12	
E-17	Screw	1	102921-0-02		E-38	Knee Lifter Bracket	1	143989-0-01	
E-18	Knee Lifter Spring	1	105106-0-01		E-39	Bolt	2	100463-0-01	
E-19	Screw	2	009711-0-12		E-40	Knee Lifter Bar	1	104619-0-02	Knee Lifter Assembly 180814-0-01
E-20	Knee Lifter B	1	115864-0-01		E-41	Bolt	1	110087-0-01	
E-21	Screw	2	113730-0-01		E-42	Knee Lifter Plate Stopper	1	114967-0-01	
E-22	Thread Release Connecting Bar	1	113729-0-01		E-43	Knee Lifter Plate	1	114966-0-01	
E-23	Thread Release Crank	1	113728-0-01		E-44	Knee Lifter Cover	1	140503-0-01	

Z. Accessories

DIFFERENT PARTS LIST



From the library of: Diamond Needle Corp

Ref. No.	Name of Parts	Q'ty	Parts No.	Assembly No.	Ref. No.	Name of Parts	Q'ty	Parts No.	Assembly No.
Z- 1	Accessory Box		110436-0-01		Z-11	Head Rest		100477-0-01	
Z- 2	Spanner 3		142721-0-01		Z-12	Head Cover		144224-0-01	
Z- 3	Spanner 8x9		100887-0-01		Z-13	Magnet		112525-0-00	
Z- 4	Spanner 6x7		107779-0-01		Z-14	Needle Bag			
Z- 5	Tweezers		117466-0-00		Z-15	Needle TVx1			
Z- 6	Screw Driver		105344-0-01		Z-16	Rubber Hinge		143910-0-01	
Z- 7	Screw Driver		101572-1-01		Z-17	Nail		109714-0-00	
Z- 9	Oil Tank		145277-1-03		Z-18	Hinge		143882-0-01	
Z-10	Oiler		114483-0-01		Z-19	Cotton Stand Assembly		150152-0-01	

* The details of included accessories are subject to change.

* Änderungen in der Aufstellung der mitgelieferten Zubehöre sind vorbehalten.

* Les détails des accessoires inclus sont sujets à des changements.

* Los detalles de los accesorios incluidos pueden variar.

DIFFERENT PARTS LIST

Specification Ref. No.	Single Needle	Tandem	$\frac{1}{8}$	$\frac{3}{16}$	$\frac{1}{4}$
A-83	Needle Plate	Needle Plate	Needle Plate $\frac{1}{8}$	Needle Plate $\frac{3}{16}$	Needle Plate $\frac{1}{4}$
	117864-0-01	115968-0-01	115966-0-01	115967-0-01	116224-0-01
B-23, 24	Needle Holder	Needle Holder	Needle Holder $\frac{1}{8}$	Needle Holder $\frac{3}{16}$	Needle Holder $\frac{1}{4}$
	181010-0-01	181009-0-01	181014-0-01	181015-0-01	181008-0-01
B-25	Needle TV $\times 1$	Needle TV $\times 1$	Needle TV $\times 1$	Needle TV $\times 1$	Needle TV $\times 1$
	105087-0-34	105087-0-34	105087-0-34	105087-0-36	105087-0-36
	1 pc.	2 pc.	2 pc.	2 pc.	2 pc.
B-37	Thread Take-up Crank	Thread Take-up Crank	Thread Take-up Crank	Thread Take-up Crank	Thread Take-up Crank
	113809-0-01	113809-0-01	113809-0-01	113602-0-01	113602-0-01
B-75			Lapper Assembly $\frac{1}{8}$	Lapper Assembly $\frac{3}{16}$	Lapper Assembly $\frac{1}{4}$
			114873-0-01	115834-0-01	113880-0-01
C-10	Feed Dog $\frac{1}{2}$	Feed Dog $\frac{1}{2}$	Feed Dog $\frac{1}{8}$	Feed Dog $\frac{3}{16}$	Feed Dog $\frac{1}{4}$
	115983-0-01	115983-0-01	115982-0-01	115984-0-01	116229-0-01
D-2	Needle Guide	Needle Guide $\frac{1}{8}$	Needle Guide $\frac{1}{8}$	Needle Guide $\frac{3}{16}$	Needle Guide $\frac{3}{16}$
	117870-0-01	115994-0-01	115992-0-01	115993-0-01	115993-0-01
D-47	Over Looper	Looper Short $\frac{1}{2}$	Looper Short $\frac{1}{4}$	Looper Short $\frac{3}{16}$	Looper Short $\frac{1}{4}$
	117869-0-01	115991-0-01	115986-0-01	115988-0-01	116230-0-01
D-48		Looper Long $\frac{1}{8}$	Looper Long $\frac{1}{8}$	Looper Long $\frac{3}{16}$	Looper Long $\frac{1}{4}$
		115990-0-01	115985-0-01	115987-0-01	115989-0-01
E-13	Presser Foot $\frac{1}{2}$	Presser Foot $\frac{1}{2}$	Presser Foot $\frac{1}{8}$	Presser Foot $\frac{3}{16}$	Presser Foot $\frac{1}{4}$
	115978-0-01	115978-0-01	115969-0-01	115974-0-01	116225-0-01
Z-15	Needle TV $\times 1$	Needle TV $\times 1$	Needle TV $\times 1$	Needle TV $\times 1$	Needle TV $\times 1$
	105087-0-34	105087-0-34	105087-0-34	105087-0-36	105087-0-36

INDEX

Parts No.	Ref. No.	Parts No.	Ref. No.	Parts No.	Ref. No.	Parts No.	Ref. No.	Parts No.	Ref. No.		
009630-4-12	A-32	009681-2-14	C-58	014770-6-22	B-76	102716-0-03	B-16	105161-0-03	B-42		
009660-3-02	D-51	009681-6-12	C-9		C-28		B-20	105163-0-01	B-43		
009670-4-12	A-69		009711-0-12	D-34	017762-2-03	E-34	C-23	105176-0-01	E-6		
	B-41	A-49		021660-1-03	C-8	C-40	105220-0-01	A-31			
	C-59	E-19		021670-2-03	A-73	C-65	105221-0-01	A-30			
009670-4-14	A-35	009711-2-12	C-4	021760-3-04	D-43	E-9	105222-0-01	A-34			
009670-5-12	A-67	009711-4-12	A-47	021780-2-02	A-91	102731-0-02	A-59	105223-0-01	A-33		
	C-16	009761-0-12	C-73	046301-4-00	F-24	102921-0-02	E-17	105225-0-01	A-22		
	C-43	013680-6-12	E-24	081002-6-70	B-68	103408-0-01	B-24	105226-0-01	A-7		
	C-53	013689-4-12	B-70	081007-0-70	F-38	104450-0-01	B-14		A-24		
	D-53		B-72	081014-6-70	A-52		C-3	105227-0-01	A-18		
009670-6-13	E-37	013760-6-10	B-13	100032-0-03	A-75	C-56	105229-0-01	A-4			
	A-37	013760-8-10	C-2	100032-0-04	A-82	104464-0-01	B-39	A-19			
009670-8-12	F-3	013761-0-10	B-48	100058-0-03	D-10	104478-0-01	B-63	105230-0-01	A-1		
	A-61		C-24		D-13	104546-0-01	A-54		A-16		
	B-26		C-31	100064-0-04	C-11	104547-0-01	A-53	105231-0-00	A-23		
	B-28		C-36	100134-0-01	A-20	104555-0-01	B-67	105233-0-01	A-27		
	D-1		C-63	100463-0-01	E-32	104619-0-02	E-40	105234-0-01	A-26		
	D-4		C-71		E-39	104890-0-02	E-33		D-26		
	D-6		D-30	100477-0-01	Z-11	105073-0-02	D-17	105238-0-02	A-92		
	E-12		D-32	100526-0-03	D-39	105078-0-01	B-32	105278-0-00	A-3		
	F-34		B-7	013761-4-10	B-10	100887-0-01	D-44	105079-0-01	B-33	105291-0-01	C-51
	009670-8-14		C-47		B-10	100887-0-01	Z-3	105087-0-34	B-25	105344-0-01	Z-6
009679-3-12	C-67	B-57	101028-0-00		C-29	Z-15	105363-0-01		B-30		
009680-5-12	A-8	B-59	101268-0-03		E-28	105087-0-36	B-25	105670-0-00	B-79		
009680-7-13	F-36	B-66	101487-0-00		B-78		Z-15	105875-0-02	D-36		
009680-7-14	A-40	C-38	101572-1-01		Z-7	105104-0-01	E-14	106527-0-01	D-49		
009681-0-12	B-34	B-53	101706-0-01		C-32	105106-0-01	E-18	107779-0-01	Z-4		
009681-2-12	D-50	013770-7-10	B-55		101706-0-01	D-7	105130-0-01	A-89	108896-0-01	B-36	
	F-25		B-61		102412-0-02	E-2	105156-0-03	C-42	109152-0-01	C-20	
009681-2-14	A-38	013780-7-10	B-38		102538-0-02	A-55	105161-0-03	A-62	109153-0-01	B-69	
009681-2-14	C-21		D-20	102716-0-03	A-85	A-72			B-71		

Parts No.	Ref. No.	Parts No.	Ref. No.	Parts No.	Ref. No.	Parts No.	Ref. No.	Parts No.	Ref. No.	
109191-0-00	F-2	113694-0-01	D-24	115875-0-01	E-36	146361-0-00	C-46			
109714-0-00	F-44	113695-0-01	D-25	115904-0-01	B-22	146362-0-00	C-49			
	Z-17	113696-0-01	D-28	115905-0-01	E-31	146368-0-01	B-62			
109993-0-01	B-17	113699-0-01	D-31	115906-0-01	F-41	146369-0-01	D-29			
110082-0-01	D-27	113700-0-01	D-33	115910-0-01	E-27	146370-0-00	F-23			
110087-0-01	E-41	113703-0-01	D-37	115966-0-01	A-83	146371-0-01	F-32			
110436-0-01	Z-1	113706-0-01	D-41	115967-0-01	A-83	146374-0-01	F-12			
110460-0-01	F-46	113707-0-01	D-42	115968-0-01	A-83	146376-0-01	F-15			
111198-0-01	F-6	113717-0-01	D-12	115969-0-01	E-13	146378-0-01	F-19			
112348-0-01	F-18	113718-0-00	D-14	115974-0-01	E-13	146381-0-01	F-10			
112467-0-02	F-26	113719-0-00	D-11	115978-0-01	E-13	146382-0-01	F-11			
112525-0-00	Z-13	113722-0-01	D-18	115982-0-01	C-10	146383-0-00	F-22			
112782-0-01	A-42	113723-0-01	D-52	115983-0-01	C-10	146989-0-01	F-7			
113582-0-00	A-48	113727-0-01	A-28	115984-0-01	C-10	147137-0-01	F-8			
113590-0-01	A-78	113728-0-01	E-23	115985-0-01	D-48	147139-0-01	F-1			
113591-0-01	A-77	113729-0-01	E-22	115986-0-01	D-47	148287-0-01	C-5			
113592-0-01	A-90		E-26	115987-0-01	D-48	148476-0-01	F-43			
113595-0-01	A-87	113730-0-01	A-60	115988-0-01	D-47	148848-0-01	F-29			
113596-0-01	A-88		E-21	115989-0-01	D-48	148849-0-01	F-31			
113597-0-01	B-9		E-25	115990-0-01	D-48	149293-0-00	C-14			
113598-0-00	B-8	113731-0-01	A-63	115991-0-01	D-47	150152-0-01	Z-19			
113599-0-00	B-11	113740-0-01	A-6	115992-0-01	D-2	180814-0-01	E-38-44			
113600-0-00	B-12	113741-0-01	A-14	115993-0-01	D-2	180879-0-01	B-51-53			
113602-0-01	B-37	113742-0-01	A-12	115994-0-01	D-2	180880-0-01	C-27, 28			
113603-0-01	B-40	113743-0-01	A-13	116224-0-01	A-83	180889-0-01	B-54, 55			
113605-0-01	B-21	113744-0-01	A-11	116225-0-01	E-13		B-60, 61			
113606-0-01	B-15	113745-0-01	A-10	116229-0-01	C-10	180909-0-01	D-15, 16			
113607-0-01	B-19	113746-0-01	A-9	116230-0-01	D-47	181008-0-01	B-23, 24			
113608-0-00	B-18	113748-0-01	A-70-73	116799-0-01	B-2	181009-0-01	B-23, 24			
113611-0-01	D-3	113749-0-01	A-70	117466-0-00	Z-5	181010-0-01	B-23, 24			
113612-0-01	D-5	113750-0-00	A-71	117666-0-01	C-50	181011-0-01	E-5, 6			
113618-0-01	A-79-81	113751-0-01	A-74	117864-0-01	A-83	181012-0-01	C-57			
113621-0-01	B-64	113753-0-01	C-45	117869-0-01	D-47	181014-0-01	B-23, 24			
113622-0-01	E-7	113759-0-01	C-54	117870-0-01	D-2	181015-0-01	B-23, 24			
113623-0-00	E-3	113760-0-01	B-73	118770-0-01	B-6	181016-0-01	D-21-27			
113624-0-01	E-8	113761-0-01	A-84	119037-0-01	B-77	181017-0-01	D-38-40			
113625-0-01	E-1	113762-0-01	B-74	122771-0-01	A-81	181019-0-01	A-16-22			
113627-0-00	E-4	113763-0-01	A-41	140357-0-01	B-3		24, 26, 27			
113638-0-01	E-16	113766-0-01	F-42	140412-0-01	B-1	181020-0-01	D-44-46			
113639-0-01	E-15	113778-0-01	F-5	140480-0-01	F-40	181969-0-03	C-32-33			
113641-0-01	B-41-46	113779-0-01	F-4	140503-0-01	E-44	181995-0-01	D-7, 8			
113644-0-01	B-44	113782-0-00	D-55	140518-0-01	F-37	182174-0-01	B-29, 31, 35			
113645-0-01	B-49	113783-0-01	D-54	140708-0-00	D-35					
113647-0-01	C-19	113785-0-01	C-68	141942-0-01	F-14					
113648-0-00	C-25	113786-0-01	A-50		F-17					
113648-0-00	C-70	113787-0-01	A-36		F-21					
113649-0-00	C-1	113791-0-01	A-46	142114-0-01	B-65					
113650-0-01	C-22	113792-0-01	A-39	142721-0-01	Z-2					
	C-64	113809-0-01	B-37	143882-0-01	Z-18					
113654-0-01	C-15	113880-0-01	B-75	143910-0-01	Z-16					
113655-0-01	C-12	114483-0-01	Z-10	143989-0-01	E-38					
113658-0-01	C-7	114561-0-01	A-80	144105-0-00	A-2					
113659-0-01	C-13	114873-0-01	B-75		A-17					
	C-66	114966-0-01	E-43	144224-0-01	Z-12					
113662-0-01	C-69	114967-0-01	E-42	144872-0-01	F-33					
113663-0-00	C-62	115834-0-01	B-75	144874-0-01	F-35					
113664-0-01	C-72	115859-0-01	B-50	144875-0-01	F-28					
113665-0-01	C-74	115860-0-01	B-47	144876-0-01	F-27					
113671-0-01	C-60	115861-0-01	C-6	144878-0-01	F-30					
113673-0-01	B-52	115862-0-01	D-9	145277-1-03	Z-9					
113679-0-00	B-56	115864-0-01	E-20	145446-0-01	A-5					
113680-0-00	B-58	115865-0-01	A-86		A-21					
113681-0-01	C-34	115866-0-01	B-27	146003-1-01	F-45					
113683-0-01	D-19	115867-0-01	A-68	146219-0-01	C-39					
113685-0-00	C-30	115868-0-01	A-25	146220-0-01	C-44-55					
113686-0-00	C-35	115871-0-01	A-15	146222-0-01	C-44					
113687-0-00	C-37	115872-0-01	E-29	146223-0-00	C-55					
113689-0-01	C-26	115873-0-01	E-30	146224-0-01	C-48					
113691-0-01	C-41	115874-0-01	E-35	146225-0-01	C-52					

From the library of: Diamond Needle Corp